

Lofric[®]
Dila-Cath[™]

A hydrophilic catheter for treatment of urethral strictures.





An easy solution to self-treatment.

A catheter without drainage eyes

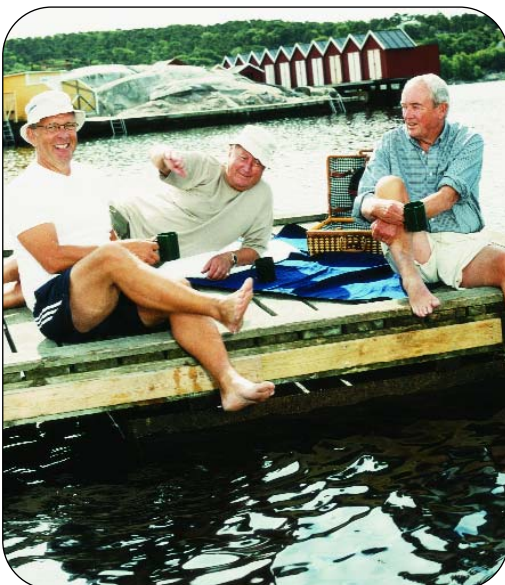
Many people have problems with strictures. As part of a successful treatment, one can use self-dilatation since it is a flexible and reliable way to prevent recurrent strictures. LoFric Dila-Cath is a low friction catheter designed for dilatation. With the aid of the catheter, users can regularly treat themselves. In this way the lumen (size) of the urethra can be maintained after surgical treatment. Moreover, it is successful, as indicated by several studies. One study in particular showed that patients using LoFric Dila-Cath for more than three years, as a weekly dilation regimen, did not have any recurrent strictures following a urethroscopy.

The best protection for patients

The coating on LoFric catheters are made up of two properties - a hydrophilic surface layer, consisting of a low friction layer of water, and a sodium chloride surface layer that is adapted to the urethra's concentration of salt and other soluble matter. This combination on the surface of the LoFric catheters has a great ability to bind water. The result is a very wet and slippery surface that provides up to 95% lower friction compared with other catheters. So LoFric Dila-Cath not only has low friction when inserted, but also when removed. For your patients, it means reduced risk of UTIs and long-term urethral complications.

Clinically proven

LoFric is the most clinically proven and well documented intermittent catheter in the world - over 20 years of clinical studies. These studies demonstrate significant clinical benefits superior to conventional catheters.



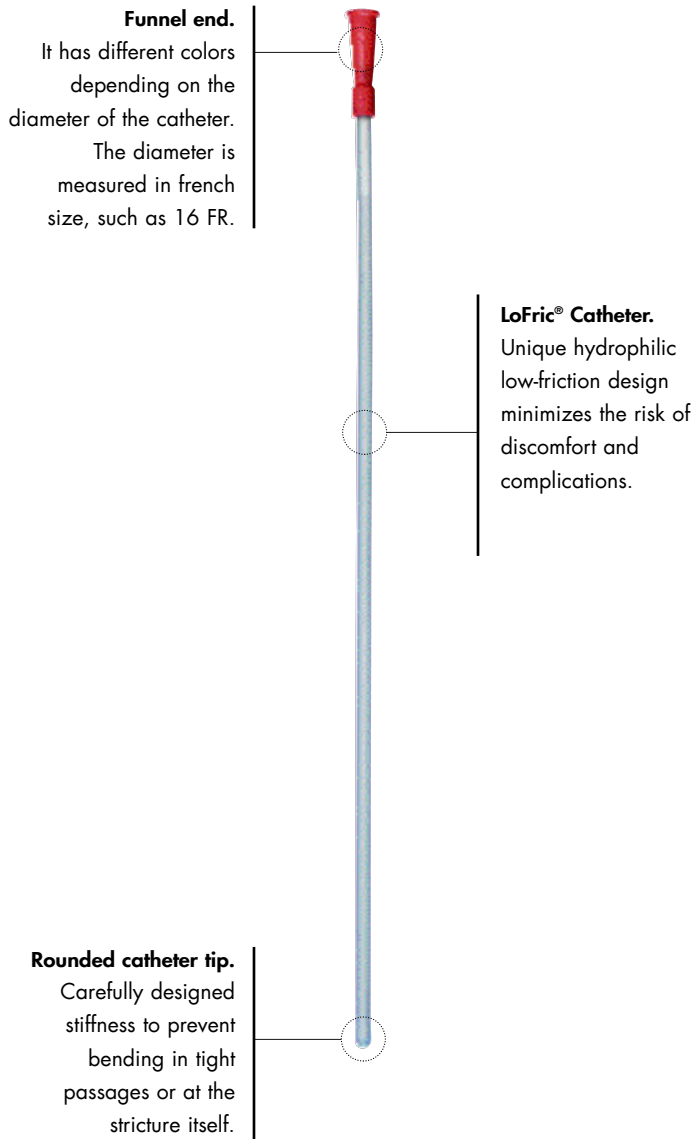
LOFRIC® DILA-CATH PRODUCT RANGE

ITEM #	TYPE	SIZE
891640	LoFric Dila-Cath, Male	16" 16FR
891840	LoFric Dila-Cath, Male	16" 18FR

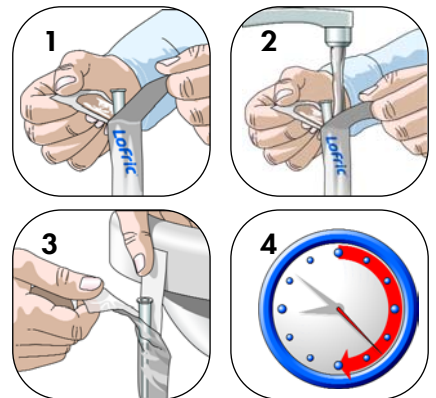
Catheter sizes

16FR	
18FR	

ESPECIALLY DESIGNED FOR STRICTURES



Directions for Use:



1. Peel open the top of the package about 2 inches.
2. Fill the package with water until the water line is about an inch below the colored funnel.
3. Remove the blue patch at the top of the package and attach the pack to a dry surface.
4. Allow the catheter to soak for at least 30 seconds, then catheterize.

LoFric is designed for one-time use only. After a single use, the hydrophilic coating is not assured to hold its lubricating water layer on inside the urethra. This may cause injury to the urethra and /or increase the risk of infection.

Knowledge, education and support

If you need additional information, we have comprehensive knowledge in all the areas associated with catheterization, dilatation, and instillation. We are willing to act as a resource, or to provide education for you and your staff.

When it comes to education and information, we have a broad program - both for healthcare professionals and for users. You may use our training staff, or the training and information on video and in print. Apart from that, we have information on products, clinical studies, user guides, starter kits, and much more. Contact us for all your needs.

77787-US-0504

