

# LoFric®



The LoFric catheter is equipped with **Urotonic™ Surface Technology** to give the lowest friction during insertion and removal.



**Coudé tip.**

**100% latex free**

## The Classic Intermittent Catheter

---

### Intended Use

Hydrophilic single-use catheter for home or healthcare use  
Intermittent catheterization / Bladder emptying

---

### Material Composition

Hydrophilic surface coating: poly(vinyl pyrrolidone)/PVP and table salt/NaCl  
Catheter: medical grade poly(vinyl chloride)/PVC  
Item sterile package: Lacquered paper, laminated film of polypropylene/PP and polyethylene/PE

---

### Package

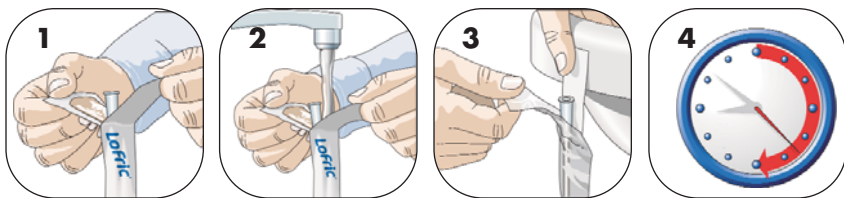
25 catheters per box / 4 boxes per shipping case

---

### Sterilization & Shelf Life

All catheters are sterilized by ethylene oxide gas. Information about the recommended best-before date is printed on the package.

## Directions for Use:



1. Peel open the top of the package about 2 inches.
2. Fill the package with water until the water reaches about an inch below the funnel end.
3. Remove the blue patch at the top of the package and attach the pack to a dry surface.
4. Allow the catheter to soak for at least 30 seconds, then catheterize.

**LoFric is designed for one-time use only.** After a single use, the hydrophilic coating is not assured to retain its water layer inside the urethra. This may cause injury to the urethra and/or increase the risk of infection.

**Also available, LoFric Plus. Same clinical benefits as classic LoFric.**

Made from a more gentle, pliable material and PVC-free. Great for users that prefer a more flexible catheter.



## LoFric® PRODUCT RANGE

ITEM #	TYPE	SIZE	
900840	LoFric, Male	16"	8FR
901040	LoFric, Male	16"	10FR
901240	LoFric, Male	16"	12FR
901440	LoFric, Male	16"	14FR
901640	LoFric, Male	16"	16FR
901840	LoFric, Male	16"	18FR
902040	LoFric, Male	16"	20FR
902240	LoFric, Male	16"	22FR
902440	LoFric, Male	16"	24FR
961040	LoFric, Coudé	16"	10FR
961240	LoFric, Coudé	16"	12FR
961440	LoFric, Coudé	16"	14FR
961640	LoFric, Coudé	16"	16FR
961840	LoFric, Coudé	16"	18FR
962040	LoFric, Coudé	16"	20FR
940840	LoFric, Female	8"	8FR
941040	LoFric, Female	8"	10FR
941240	LoFric, Female	8"	12FR
941440	LoFric, Female	8"	14FR
941640	LoFric, Female	8"	16FR
941840	LoFric, Female	8"	18FR
980840	LoFric, Female	6"	8FR
981040	LoFric, Female	6"	10FR
981240	LoFric, Female	6"	12FR
981440	LoFric, Female	6"	14FR
920640	LoFric, Pediatric	8"	6FR
920840	LoFric, Pediatric	8"	8FR
921040	LoFric, Pediatric	8"	10FR
990640	LoFric, Adolescent	12"	6FR
990840	LoFric, Adolescent	12"	8FR
991040	LoFric, Adolescent	12"	10FR

### Catheter sizes

6FR	
8FR	
10FR	
12FR	
14FR	
16FR	
18FR	
20FR	
22FR	
24FR	

## LoFric® PLUS PRODUCT RANGE

ITEM #	TYPE	SIZE	
903840	LoFric Plus, Male	16"	8FR
904040	LoFric Plus, Male	16"	10FR
904240	LoFric Plus, Male	16"	12FR
904440	LoFric Plus, Male	16"	14FR
904640	LoFric Plus, Male	16"	16FR
904840	LoFric Plus, Male	16"	18FR
905040	LoFric Plus, Male	16"	20FR
905240	LoFric Plus, Male	16"	22FR
905440	LoFric Plus, Male	16"	24FR
943840	LoFric Plus, Female	8"	8FR
944040	LoFric Plus, Female	8"	10FR
944240	LoFric Plus, Female	8"	12FR
944440	LoFric Plus, Female	8"	14FR
944640	LoFric Plus, Female	8"	16FR
944840	LoFric Plus, Female	8"	18FR
983840	LoFric Plus, Female	6"	8FR
984040	LoFric Plus, Female	6"	10FR
984240	LoFric Plus, Female	6"	12FR
984440	LoFric Plus, Female	6"	14FR
984640	LoFric Plus, Female	6"	16FR
984840	LoFric Plus, Female	6"	18FR
923640	LoFric Plus, Pediatric	8"	6FR
923840	LoFric Plus, Pediatric	8"	8FR
924040	LoFric Plus, Pediatric	8"	10FR
993640	LoFric Plus, Adolescent	12"	6FR
993840	LoFric Plus, Adolescent	12"	8FR
994040	LoFric Plus, Adolescent	12"	10FR

