

LoFric
Primo™



The **adhesive area** on the back can be used to hang the package.

Use this **large loop** to peel open or hang the catheter package.

Fold and press the **sterile water** pouch to allow the water to run down and activate the catheter's surface layer.

The **handling strip** gives you a sterile and firm grip without touching the catheter.

Easy **"peel-open"** packaging.

The LoFric catheter is equipped with **Urotonic™ Surface Technology** to give the lowest friction during insertion and removal.



Foldable and discreet.

Use this **large loop** to peel open the catheter package.

100% latex free

The Discreet and Innovative Catheter

Intended Use

Hydrophilic single-use catheter for home or healthcare use
Intermittent catheterization / Bladder emptying

Material Composition

Hydrophilic surface coating: poly(vinyl pyrrolidone)/PVP and table salt/NaCl
Catheter: medical grade poly(vinyl chloride)/PVC; Plastic packaging: polyethylene/PE
Water pocket: Laminate foil of poly(ethylene terephthalate)/PET, polyethylene/PE and aluminium, sterile water

Package

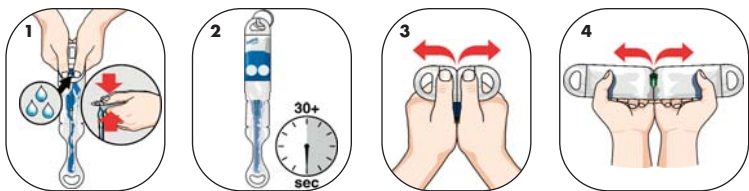
Individual "peel-open" packaging
30 catheters per box / 4 boxes per shipping case

Sterilization & Shelf Life

All catheters are sterilized by irradiation. Information about the recommended best-before date is printed on the package.

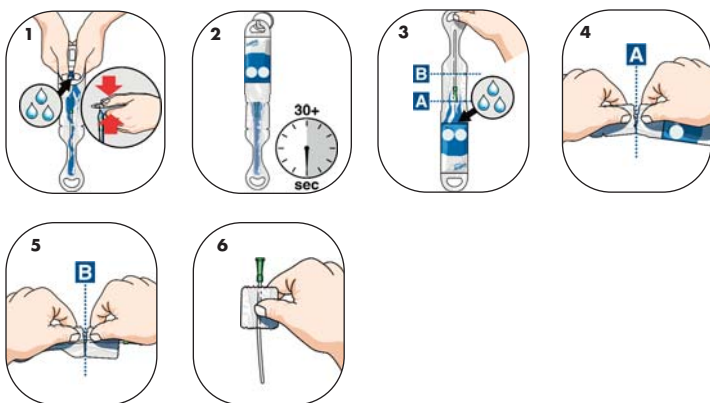
Directions for Use:

Opening 1 (Using minimal hand dexterity and/or for sterile use)



1. Fold the water pouch and press with both hands.
2. Let the catheter soak for 30 seconds while you prepare for catheterization.
- 3-4. Peel open the packaging and continue until you reach the catheter's colored connector. Remove the catheter from the package and catheterize.

Opening 2 (Using the handling strip for a "no-touch" technique)



1. Fold the water pouch and press with both hands.
2. Let the catheter soak for 30 seconds while you prepare for catheterization.
3. Turn the package upside down to return the water into the pouch.
4. Tear at indentation A from both sides to separate the water pouch from the rest of the package.
5. Tear at indentation B from both sides.
6. The remaining part of the package can be used as a handling strip for a hygienic and firm grip during insertion.

PRODUCT RANGE

Item #	Type	Length	Size
9600840	LoFric Primo, Male	16"	8FR
9601040	LoFric Primo, Male	16"	10FR
9601240	LoFric Primo, Male	16"	12FR
9601440	LoFric Primo, Male	16"	14FR
9601640	LoFric Primo, Male	16"	16FR
9601840	LoFric Primo, Male	16"	18FR
9661040	LoFric Primo, Coudé	16"	10FR
9661240	LoFric Primo, Coudé	16"	12FR
9661440	LoFric Primo, Coudé	16"	14FR
9661640	LoFric Primo, Coudé	16"	16FR
9661840	LoFric Primo, Coudé	16"	18FR
9640840	LoFric Primo, Female	8"	8FR
9641040	LoFric Primo, Female	8"	10FR
9641240	LoFric Primo, Female	8"	12FR
9641440	LoFric Primo, Female	8"	14FR
9641640	LoFric Primo, Female	8"	16FR
9641840	LoFric Primo, Female	8"	18FR
9680840	LoFric Primo, Female	6"	8FR
9681040	LoFric Primo, Female	6"	10FR
9681240	LoFric Primo, Female	6"	12FR
9681440	LoFric Primo, Female	6"	14FR
9620640	LoFric Primo, Pediatric	8"	6FR
9620840	LoFric Primo, Pediatric	8"	8FR
9621040	LoFric Primo, Pediatric	8"	10FR

CATHETER FUNNEL-END COLOR CODE

6FR	
8FR	
10FR	
12FR	
14FR	
16FR	
18FR	